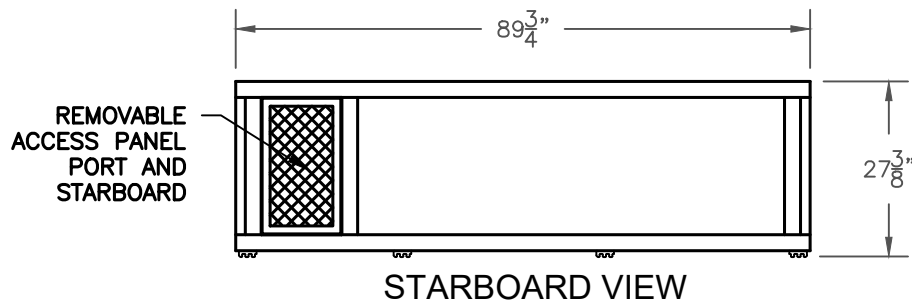
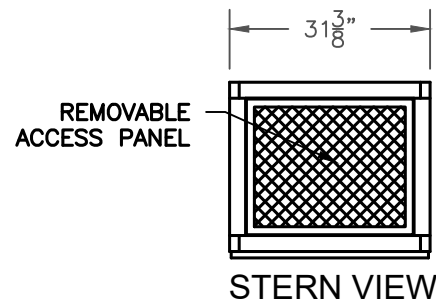
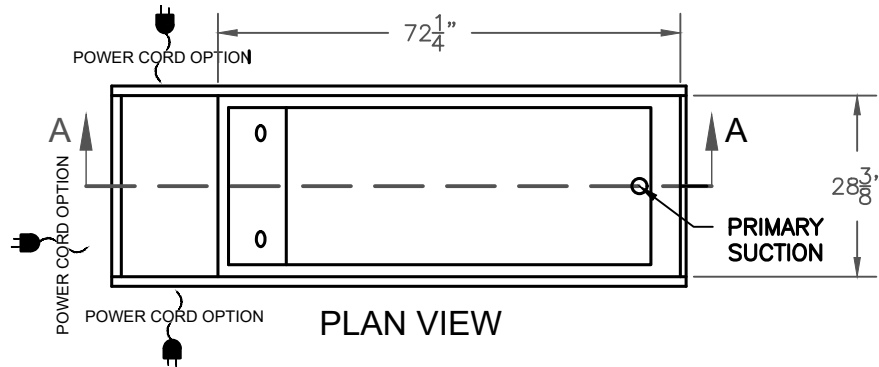
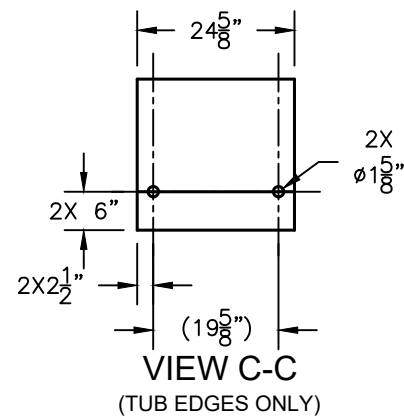
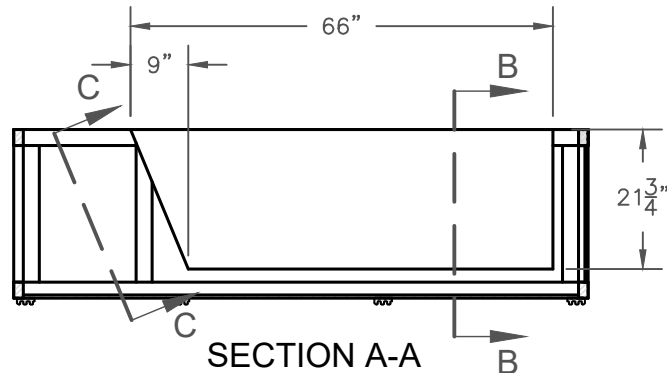
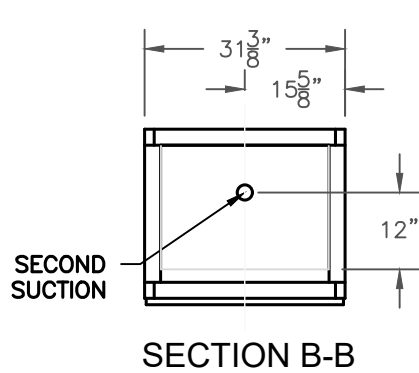
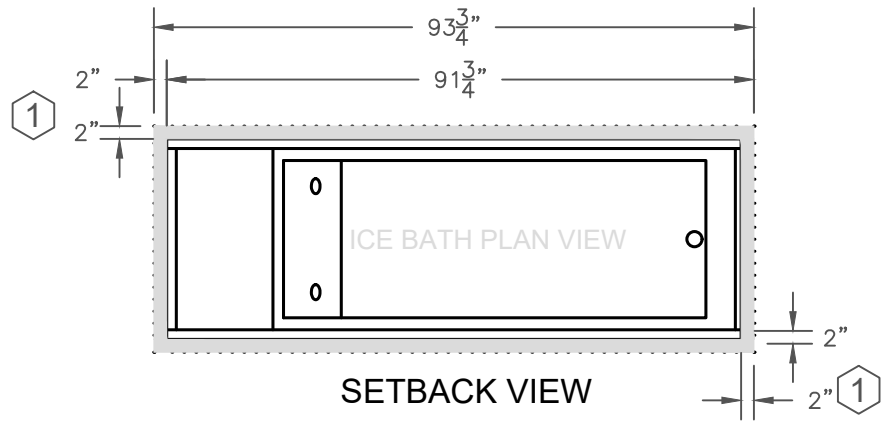


Setback and Clearance Notes

1 To maintain good air circulation for cooling, please maintain a minimum of 2" from the Stern, Starboard and Port sides to nearest wall.



Materials Data

Dry Weight: 340 lbs (Without Lid)
Water Weight: 736 lbs
Wet Weight: 1076 lbs (Without Lid)
Soft Spa Lid: 15 lbs
Premium Wooden Lid: 30 Lbs
Tub: 16GA 304 Stainless Steel
Woodframe: Yukari FSC-Certified Rot-Resistant Red Grandis Hardwood
Plywood: Aquatek Meranti Fir Water-Proof Marine Plywood
Wood Sealer: Exoshield Tung Oil

Electrical Data

Voltage: 120 volts single phase
Frequency: 60hz
Amps: 12.5 amps
GFCI Trip Current: 4-6mA

Mechanical Data

Compressor Power: 1/2 hp
Refrigerant: R134a
Plunges Time per Day: 270 minutes
Ambient Operating Temperature: : 15°F - 120°F
Water Temperature: 0°F - 70°F

Water Treatment

Total Water Volume: 88 gal
Disinfection: O₃
Pump: DC80E-24100VR-1
Filter: 50sf Waterways (Chlorine Optional)
Ozone Injection Rate: 100mg/hr
Flowrate: 10 GPM

DISCLAIMER:

THE MOROZKO IS DESIGNED TO SUPPORT A HEALTHY LIFESTYLE, NOT DIAGNOSE, CURE, OR PREVENT SPECIFIC DISEASES OR MEDICAL CONDITIONS. MOROZKO ICE BATHS ARE NOT MEDICAL DEVICES, AND HAVE NOT BEEN EVALUATED BY THE FDA. MOROZKO MAKES NO CLAIMS OR WARRANTIES WITH REGARD TO THE HEALTH EFFECTS OF COLD PLUNGE THERAPY OR USE OF MOROZKO PRODUCTS. SEEK MEDICAL ADVICE FROM YOUR PHYSICIAN BEFORE EMBARKING ON A PROGRAM OF DELIBERATE COLD EXPOSURE.

USA & CANADA (in)



7150 W. Roosevelt Street
Suite A161
Phoenix, AZ 85043
(602) 456-6338
www.morozkoforge.com

TECHNICAL SPECIFICATIONS
PRO66_4P

SCALE: 1:30

SHEET
SIZE

B

Setback and Clearance Notes

1 To maintain good air circulation for cooling, please maintain a minimum of 50.8mm from the Stern, Starboard and Port sides to nearest wall.

Materials Data

Dry Weight: 127 kg (Without Lid)
Water Weight: 335 kg
Wet Weight: 462 kg (Without Lid)
Soft Spa Lid: 7 kg
Premium Wooden Lid: 14 kg
Tub: 16GA 304 Stainless Steel
Woodframe: Yukari FSC-Certified Rot-Resistant Red Grandis Hardwood
Plywood: Aquatek Meranti Fir Water-Proof Marine Plywood
Wood Sealer: Exoshield Tung Oil

Electrical Data

Voltage: 120V Single Phase
Frequency: 60hz
Amps: 12.5 amps
GFCI Trip Current: 4-6mA

Mechanical Data

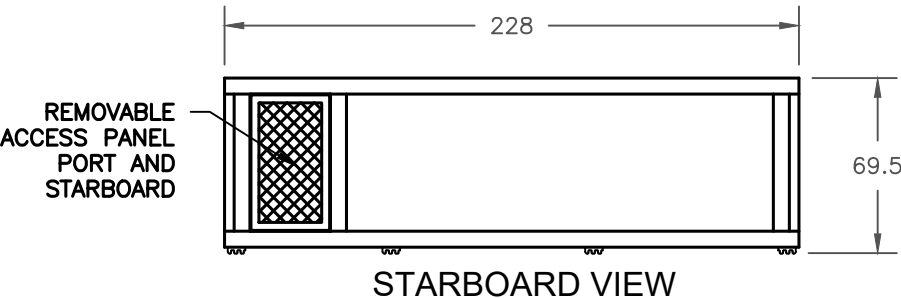
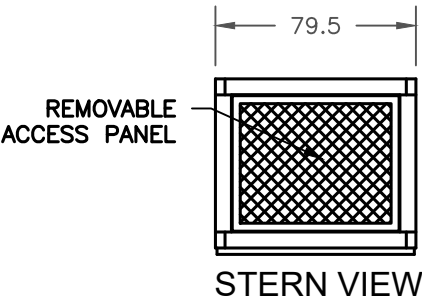
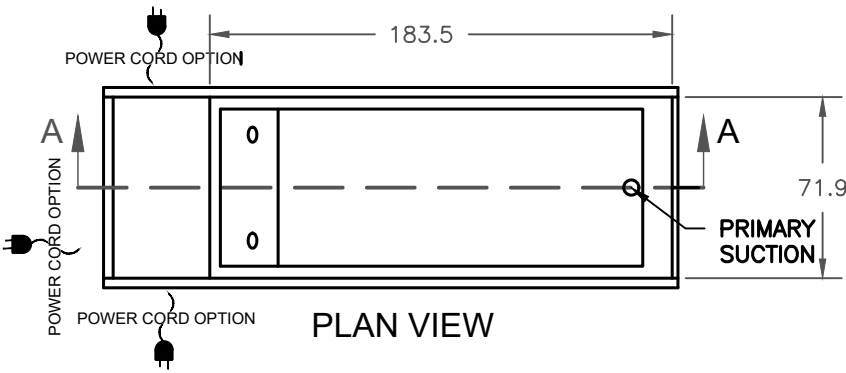
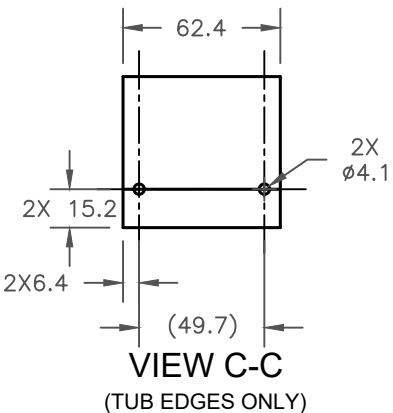
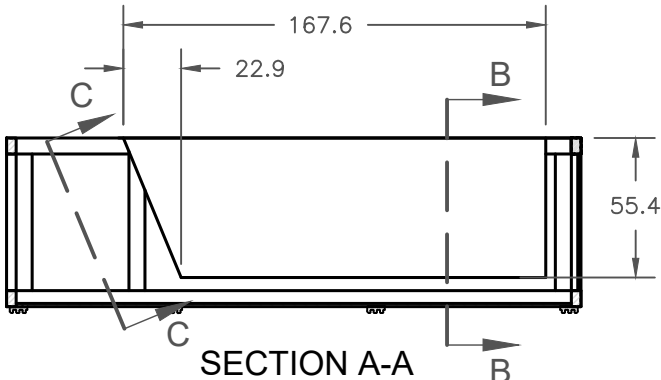
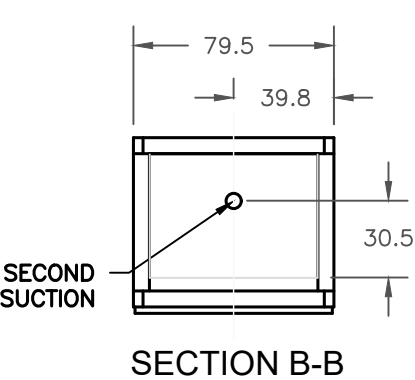
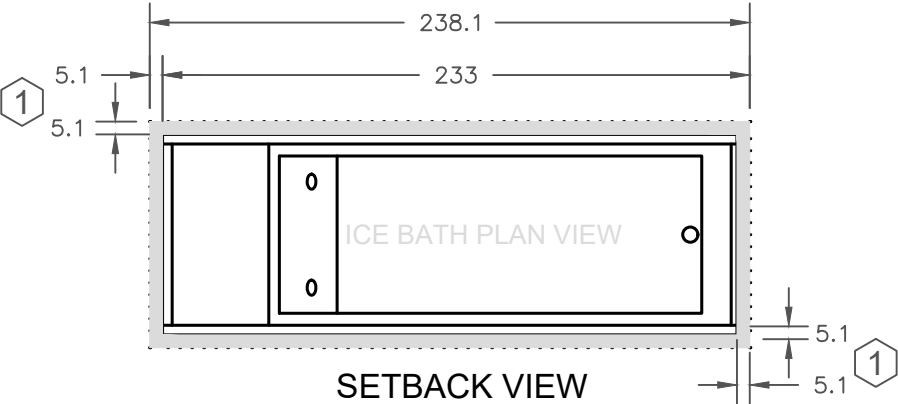
Compressor Power: 1/2 hp
Refrigerant: R134a
Plunges Time per Day: 270 minutes
Ambient Operating Temperature: : -10°C - 49°C
Water Temperature: -18°C - 21°C

Water Treatment


Total Water Volume: 334 L
Disinfection: O₃
Pump: DC80E-24100VR-1
Filter: 50sf Waterways, (Chlorine optional)
Ozone Injection Rate: 200 mg/hr (dual 100 mg/hr O₃ generator)
Flowrate: 38 LPM

DISCLAIMER:

THE MOROZKO IS DESIGNED TO SUPPORT A HEALTHY LIFESTYLE, NOT DIAGNOSE, CURE, OR PREVENT SPECIFIC DISEASES OR MEDICAL CONDITIONS. MOROZKO ICE BATHS ARE NOT MEDICAL DEVICES, AND HAVE NOT BEEN EVALUATED BY THE FDA. MOROZKO MAKES NO CLAIMS OR WARRANTIES WITH REGARD TO THE HEALTH EFFECTS OF COLD PLUNGE THERAPY OR USE OF MOROZKO PRODUCTS. SEEK MEDICAL ADVICE FROM YOUR PHYSICIAN BEFORE EMBARKING ON A PROGRAM OF DELIBERATE COLD EXPOSURE.



METRIC (cm)

| | | |
|--|--------------------------|---------------------|
|  <div>7150 W. Roosevelt Street Suite A161 Phoenix, AZ 85043 (602) 456-6338 www.morozkoforge.com</div> | TECHNICAL SPECIFICATIONS | |
| | PRO66-4P- 220V | |
| SCALE: | 1:30 | SHEET SIZE B |