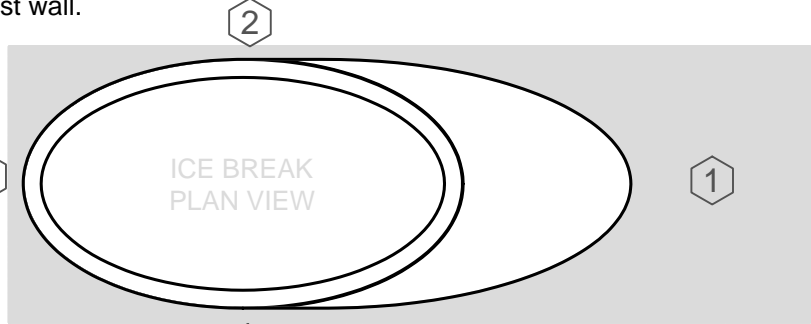


Setback and Clearance Notes

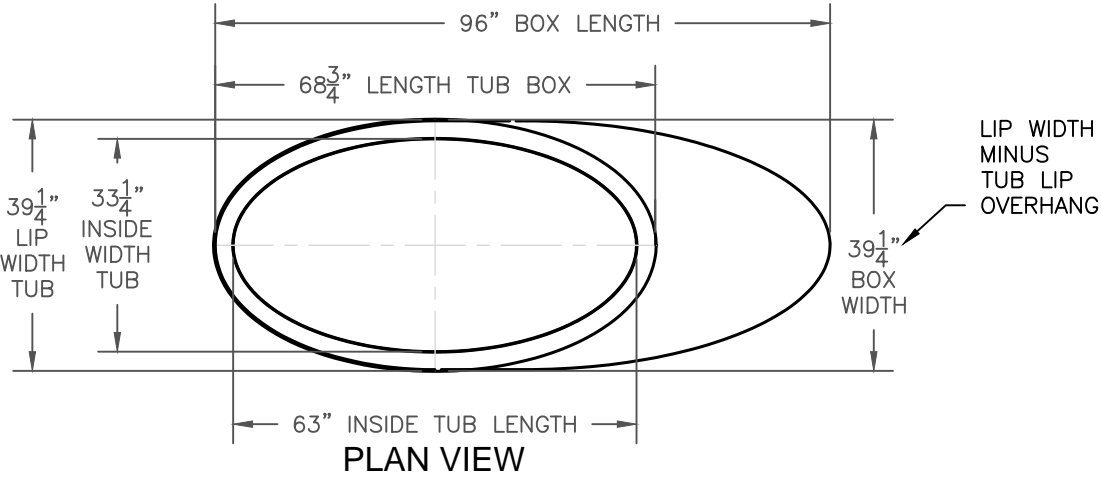
- 1

To facilitate service and filter changes, maintain a clearance of 28" from Bow to nearest wall.
- 2

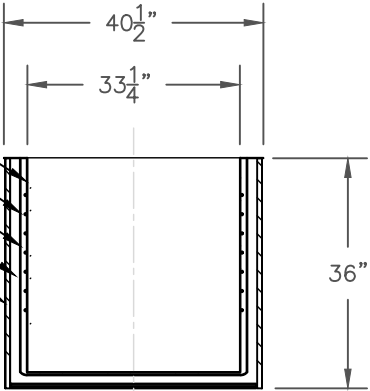
To maintain good air circulation for cooling, please maintain a minimum of 2" from the Starboard, Port and Stern sides to nearest wall.



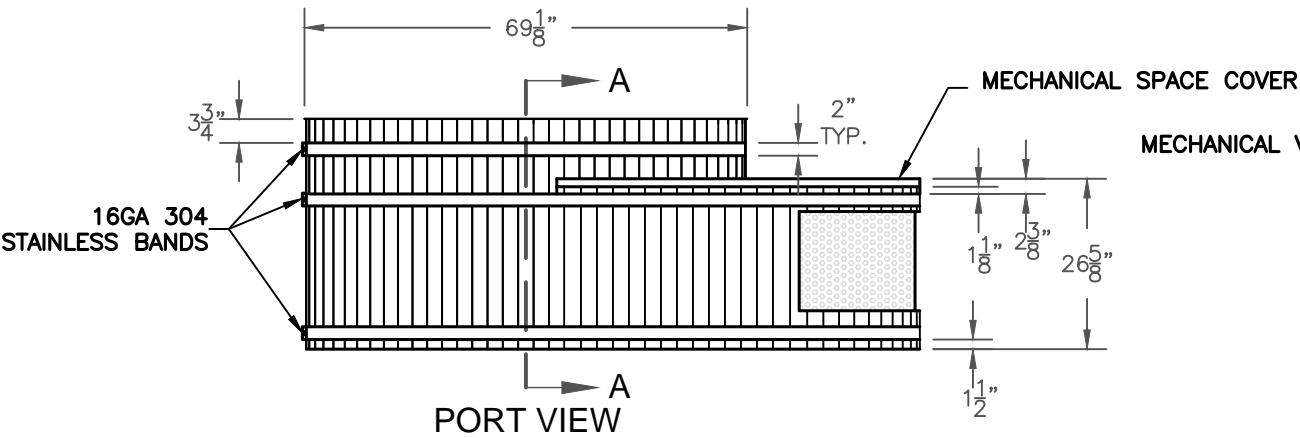
SETBACK VIEW



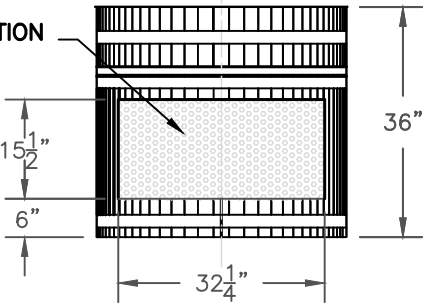
14GA(.075) 304 STAINLESS
3/8" EVAP. COIL
1/8" FROST KING INSULATION
1-1/2" INSULATION
1-1/2"x2-1/2" WOODEN STAVES



SECTION A-A



PORT VIEW



BOW VIEW

Materials Data

Dry Weight: 450 lbs (Without Lid)
Water Weight: 1243 lbs
Wet Weight: 1693 lbs (Without Lid)
Soft Spa Lid: 15 lbs
Premium Wooden Lid: 30 Lbs
Tub: 14GA 304 Stainless Steel #4 Finish
Woodframe: Incense Cedar
Wood Sealer: Exoshield Tung Oil

Electrical Data

Voltage: 120 volts single phase
Frequency: 60hz
Amps: 12.5 amps
GFCI Trip Current: 4-6mA

Mechanical Data

Compressor Power: 1/2 hp
Refrigerant: R134a
Plunges Time per Day: 270 minutes
Ambient Operating Temperature: : 15°F - 120°F
Water Temperature: 0°F - 70°F

Water Treatment

Total Water Volume: 149 gal
Disinfection: O₃
Pump: DC85E-24100S
Filter: 50sf Waterways (Chlorine Optional)
Ozone Injection Rate: 200mg/hr
Flowrate: 10 GPM

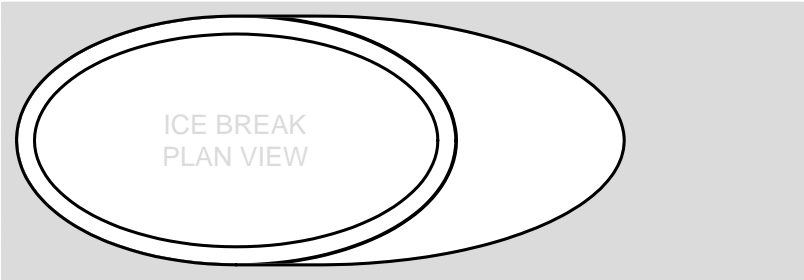
DISCLAIMER:

THE MOROZKO IS DESIGNED TO SUPPORT A HEALTHY LIFESTYLE, NOT DIAGNOSE, CURE, OR PREVENT SPECIFIC DISEASES OR MEDICAL CONDITIONS. MOROZKO ICE BATHS ARE NOT MEDICAL DEVICES, AND HAVE NOT BEEN EVALUATED BY THE FDA. MOROZKO MAKES NO CLAIMS OR WARRANTIES WITH REGARD TO THE HEALTH EFFECTS OF COLD PLUNGE THERAPY OR USE OF MOROZKO PRODUCTS. SEEK MEDICAL ADVICE FROM YOUR PHYSICIAN BEFORE EMBARKING ON A PROGRAM OF DELIBERATE COLD EXPOSURE.

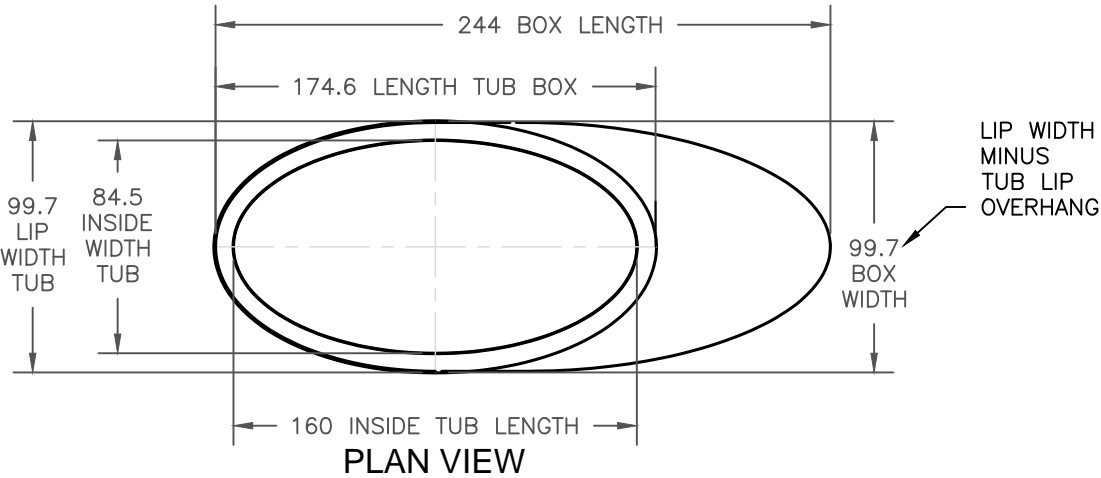


Setback and Clearance Notes

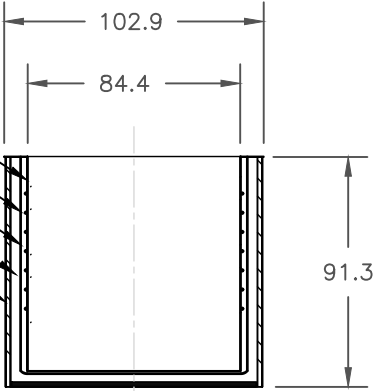
To facilitate service and filter changes, maintain a clearance of 28" from Bow to nearest wall.
To maintain good air circulation for cooling, please maintain a minimum of 2" from the Starboard, Port and Stern sides to nearest wall.



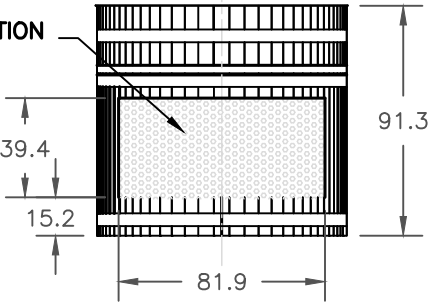
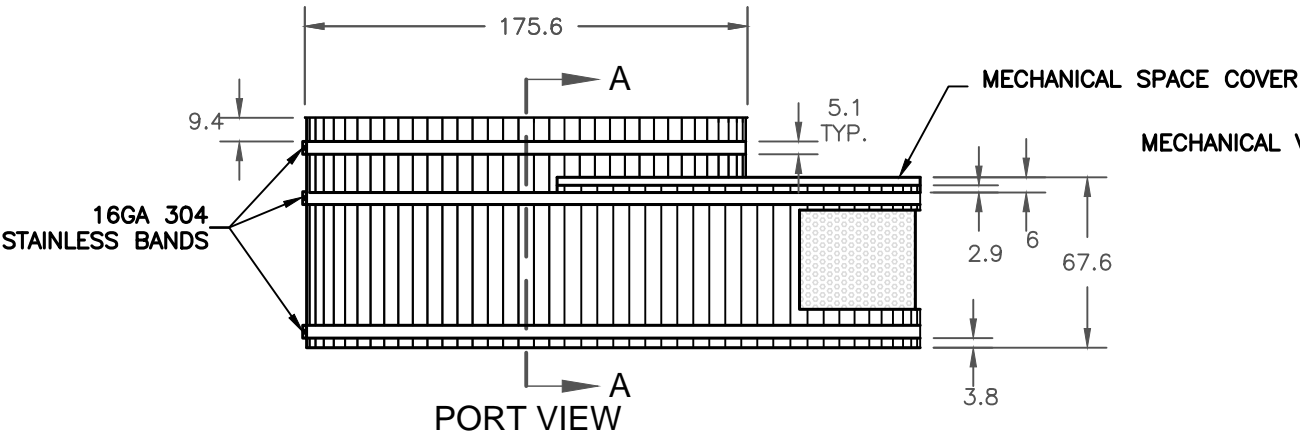
SETBACK VIEW



14GA(.075) 304 STAINLESS
3/8" EVAP. COIL
1/8" FROST KING INSULATION
1-1/2" INSULATION
1-1/2"x2-1/2" WOODEN STAVES



SECTION A-A



BOW VIEW

Materials Data

Dry Weight: 450 lbs (Without Lid)
Water Weight: 1243 lbs
Wet Weight: 1693 lbs (Without Lid)
Soft Spa Lid: 15 lbs
Premium Wooden Lid: 30 Lbs
Tub: 14GA 304 Stainless Steel #4 Finish
Woodframe: Incense Cedar
Wood Sealer: Exoshield Tung Oil

Electrical Data

Voltage: 120 volts single phase
Frequency: 60hz
Amps: 12.5 amps
GFCI Trip Current: 4-6mA

Mechanical Data

Compressor Power: 1/2 hp
Refrigerant: R134a
Plunges Time per Day: 270 minutes
Ambient Operating Temperature: : 15°F - 120°F
Water Temperature: 0°F - 70°F

Water Treatment

Total Water Volume: 149 gal
Disinfection: O₃
Pump: DC85E-24100S
Filter: 50sf Waterways (Chlorine Optional)
Ozone Injection Rate: 200mg/hr
Flowrate: 10 GPM

DISCLAIMER:

THE MOROZKO IS DESIGNED TO SUPPORT A HEALTHY LIFESTYLE, NOT DIAGNOSE, CURE, OR PREVENT SPECIFIC DISEASES OR MEDICAL CONDITIONS. MOROZKO ICE BATHS ARE NOT MEDICAL DEVICES, AND HAVE NOT BEEN EVALUATED BY THE FDA. MOROZKO MAKES NO CLAIMS OR WARRANTIES WITH REGARD TO THE HEALTH EFFECTS OF COLD PLUNGE THERAPY OR USE OF MOROZKO PRODUCTS. SEEK MEDICAL ADVICE FROM YOUR PHYSICIAN BEFORE EMBARKING ON A PROGRAM OF DELIBERATE COLD EXPOSURE.